



## RFO WM2626 UHF RFID-Antenna

### Product Description

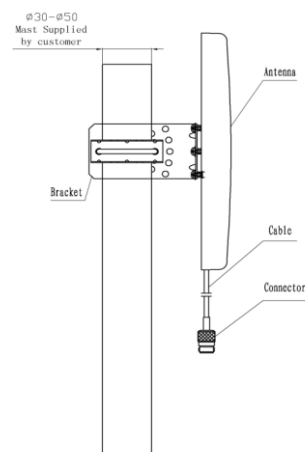
#### Main Features

The RFO WM2626 is an Circularly-polarized panel antenna for various RFID applications.

This antenna is supplied with down-tilt mast mounting kit.

The performance will be exceed your expectations.

#### Product pictures



<b>Article no:</b>	Standard	RFO WM2626
<b>Typical Applications</b>		
<ul style="list-style-type: none"> <li>•Manufacturing</li> <li>•Security</li> <li>•Waste management</li> <li>•Logistics</li> </ul>	<ul style="list-style-type: none"> <li>•Health Care</li> <li>•Asset management</li> <li>•Food</li> <li>•Transportation</li> </ul>	<ul style="list-style-type: none"> <li>•Service Maintenance &amp; Diagnostics</li> <li>•Automotive</li> <li>•Retail &amp; POS</li> <li>•Home Automation</li> </ul>

#### Contact:

infos@radioforce.net  
www.radioforce.net



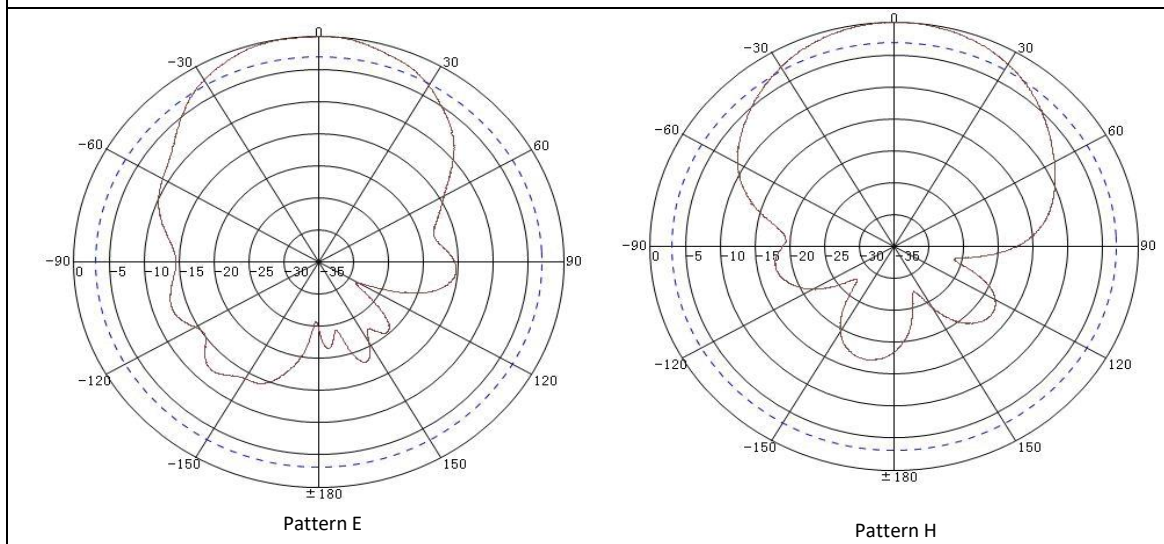
## Technical Specifications

## RFO WM2626

### Physical Characteristics

Dimensions	260 x 260 x 35 mm
Weight	0,75 kg
Freq.Range-MHz	865 to 869
Bandwidth-MHz	4
Gain-dBi	9
Ver.Beamwidth-°	70
Hor.Beamwidth-°	65
F/B Ratio-dB	≥21
VSWR	≤1.4
Impedance-Ω	50
Polarization	RHCP
Max.Power-W	100
Connector	1m cable with N female

### Pattern



**Contact:**

infos@radioforce.net  
www.radioforce.net